

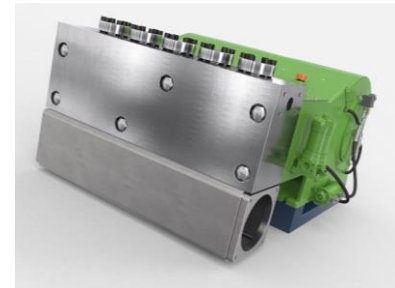
## 五柱塞泵 K 120000 - 5G

### Quintuplex Plunger Pump

P 66-1

01.04.2018

- 流量基于100%的容积率和20°C的环境温度
- 最小入口压力取决于流体介质
- 速度范围10-100%取决于连杆力
- 动态平衡曲轴
- 齿轮强制润滑和油冷却
- 依据要求定制减速比  $i = 4,76; 5,72; 6,35$
- 适用 API 674 标准
- 根据要求, 可以使用特殊介质, 例如海水, 乙二醇, 甲醇, 油等。



- Flow rate is based on 100% volumetric efficiency and 20°C ambient temperature
- min. inlet pressure depending on fluid medium
- Speed range 0 -100% depending on rod force
- Crankshaft dynamically balanced
- Gear with external force-fed lubrication and oil cooling
- External gear ratio on request f.e.  $i = 4,76; 5,72; 6,35$
- Also available to API 674
- Special medium such as sea water, glycol, methanol, oils, etc. on request



$n_{nom} = 320 \text{ 1/min}$		p max. bar @ kW				Kopftyp / Head type	
Typ / Type	l/min	900 kW	1000 kW	1100 kW	1200 kW	A	MC(H)
K 120028 - 5G	158	2970	3300	3500	-----	x	
K 120030 - 5G	181	2585	2875	3160	3450	x	
K 120032 - 5G	206	2275	2525	2780	3030	x	
K 120036 - 5G	260	1800	2000	2200	2400	x	
K 120040 - 5G	322	1455	1655	1780	1940	x	
K 120045 - 5G	407	1150	1280	1405	1530	x	
K 120050 - 5G	502	930	1035	1140	1240	x	
K 120055 - 5G	608	770	855	940	1025	x	x
K 120060 - 5G	723	645	720	790	860	x	x
K 120065 - 5G	849	550	610	675	735	x	x
K 120070 - 5G	985	475	530	580	635	x	x
K 120075 - 5G	1130	415	460	505	550	x	x
K 120080 - 5G	1286	365	405	445	485		x
K 120085 - 5G	1452	320	360	395	430		x
K 120090 - 5G	1628	290	320	350	385		x
K 120095 - 5G	1813	260	285	315	345		x
K 120100 - 5G	2010	235	260	285	310		x
K 120110 - 5G	2432	190	215	235	255		x
K 120120 - 5G	2894	160	180	200	215		x
K 120130 - 5G	3395	135	155	170	185		x
K 120140 - 5G	3939	115	130	145	155		x

API 674 = max. 260 1/min

= Ultra High Pressure UHP

# 尺寸图 K 120000 - 5G

Dimension drawing

7.500 kg

P 66-2

01.04.2018

